

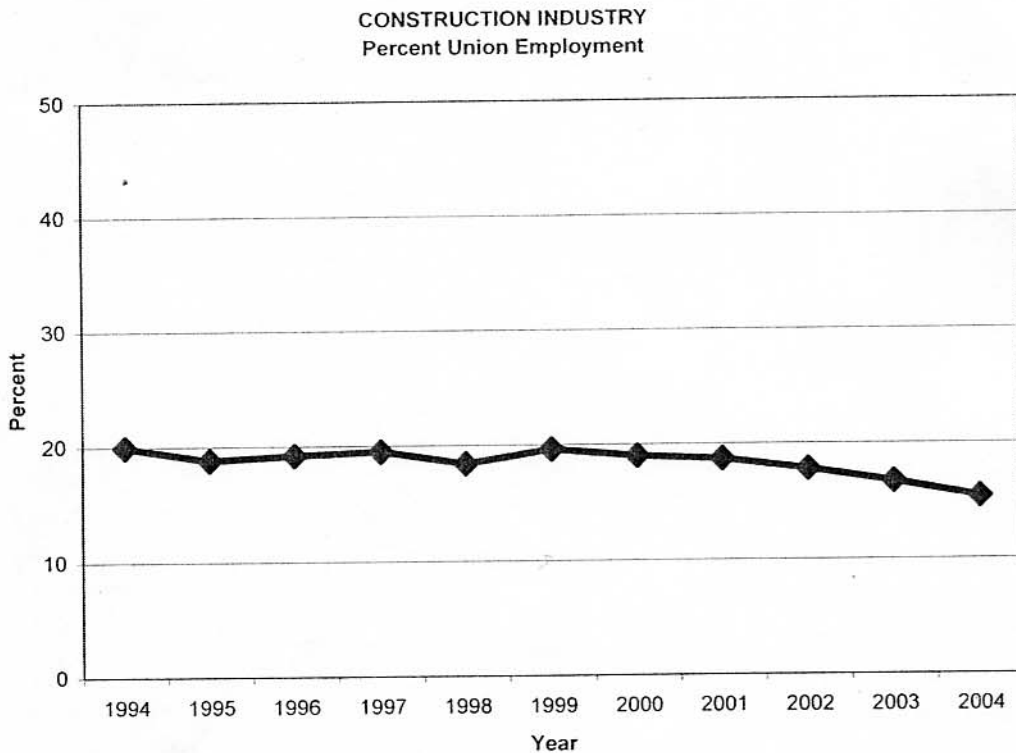
# CONSTRUCTION LABOR RESEARCH COUNCIL

## Union/Non-Union Trends

The percentage of all workers in the construction industry who are union members was 15.4 percent in 2004. Among craft workers the percentage of construction industry workers was 18.0 percent. These figures are the most recently available data from the Bureau of Labor Statistics.

While it is difficult to evaluate small year-to-year changes in the rate of unionization, the portion of jobs held by union workers has never been lower. Viewing the past decade, percentage of union jobs held steady at nearly 20 percent in the first half of the period. There has been a steady decline in the past five years. Both the rate of unionization and number of union workers were substantially higher in the 1970's and earlier.

The declines are real, but reflect an abnormal mix of types of construction. The heavily non-union residential segment of the industry is exceptionally strong. At the same time, the more heavily unionized industrial sector continues weak.



August 2005

The national average hides significant variations in the percentage of union employment by region. About 40 percent of industry employment was by union craft workers in the east north central region. There were also large parts of the country in which union construction was the exception. Fewer than 10 percent of all construction craft workers are union members in the two regions in the South.

Some regional trends are evident when comparing 2004 with 2002:

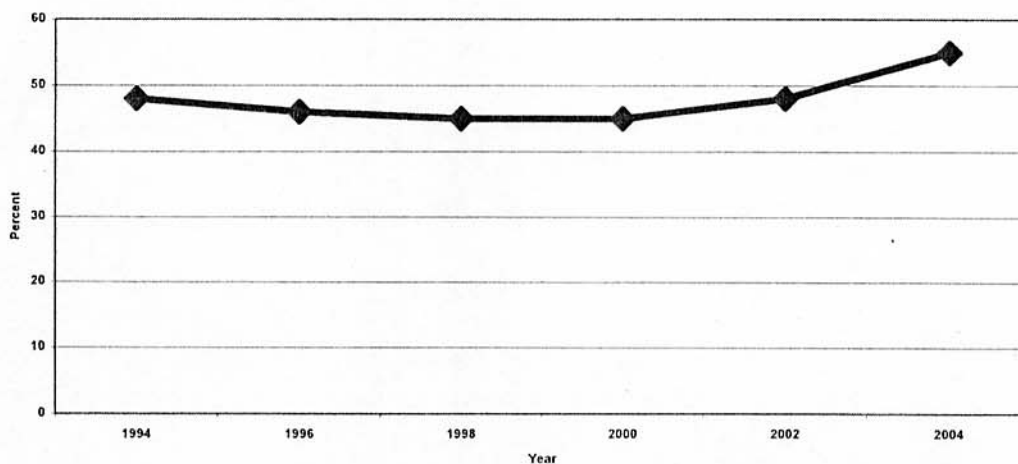
- o The percentage of union employment declined in eight of nine regions.
- o The number of union workers was steady or up in eight of nine regions.

The data indicates how widespread the declines have been as well as union job expansion which masks the fact that the organized segment is falling further behind. The strength of residential construction was pervasive.

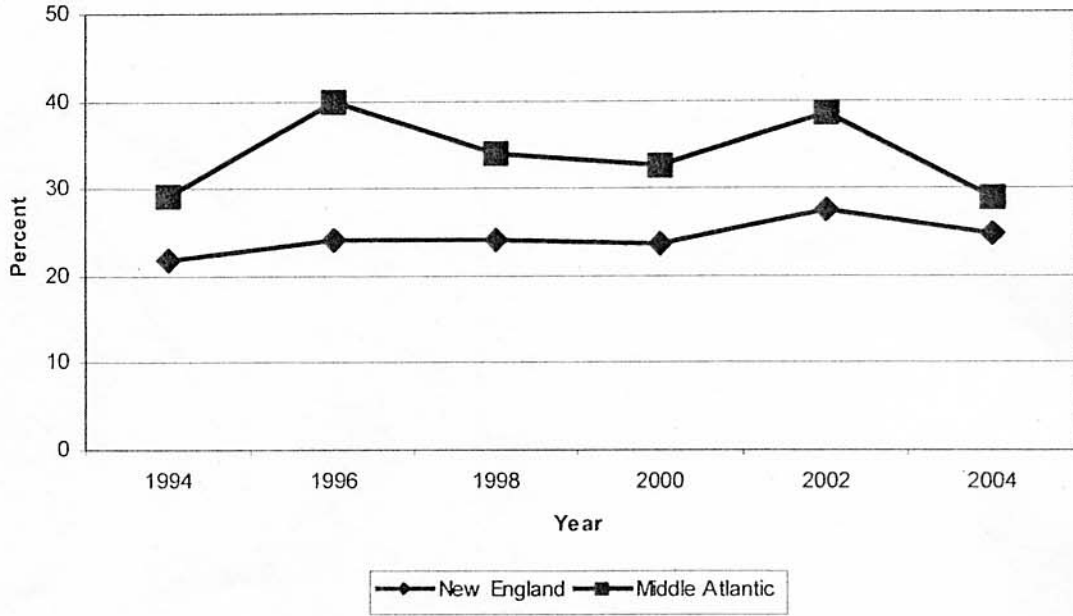
While regional figures are subject to fluctuations resulting from small sample sizes and variations in types of construction, the widespread nature of the declines in union job percentages cannot be ignored. The only region not experiencing a decline in union employment percentage was the east north central (unchanged). This region also has the most union jobs. Its stability of employment share has a strong impact upon the national figures.

The number of workers in the construction industry who are union members is collected by the Bureau of Labor Statistics. National data are published by BLS. Regional data have been compiled from special listings provided by BLS to CLRC. While the data series present a consistent means of measuring trends in unionization in the construction industry, they do not measure the amount of construction performed union or non-union.

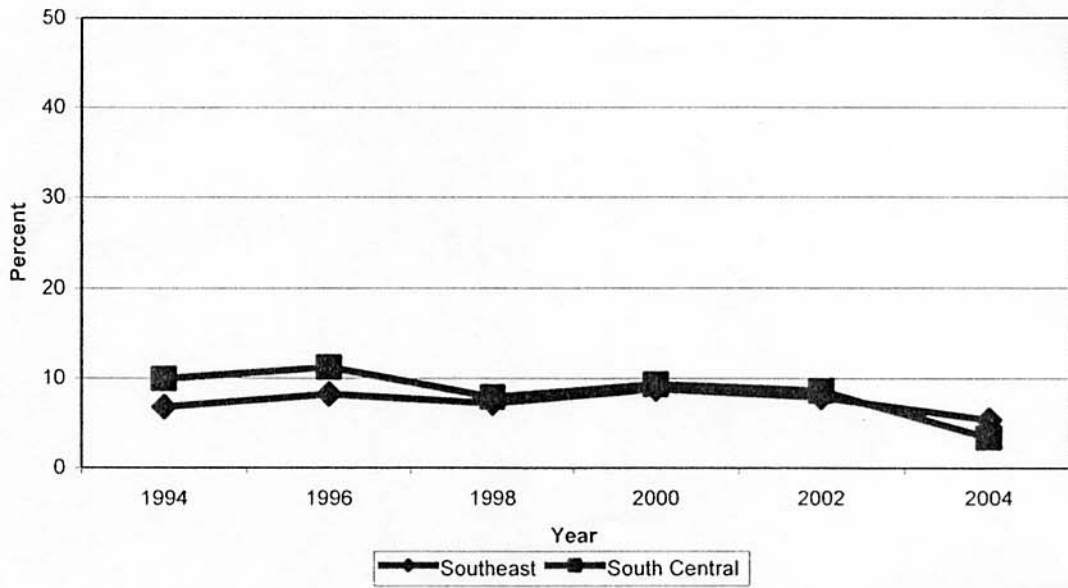
Residential Construction Volume  
As a Percentage of Total Construction Volume



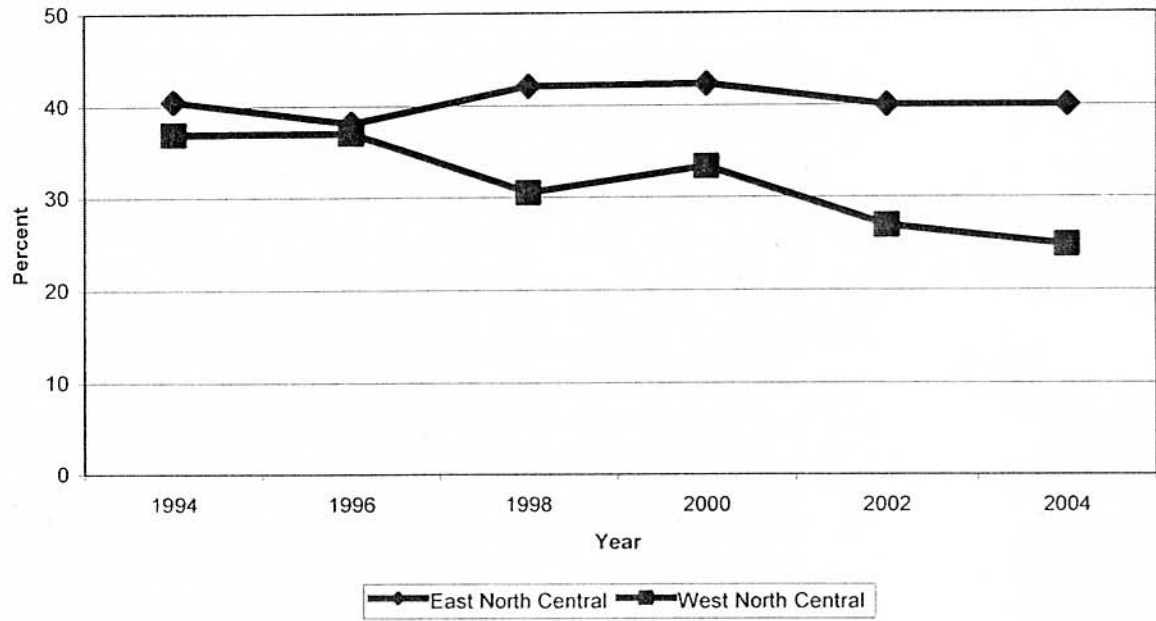
Percent Union Employment  
Northeast Region



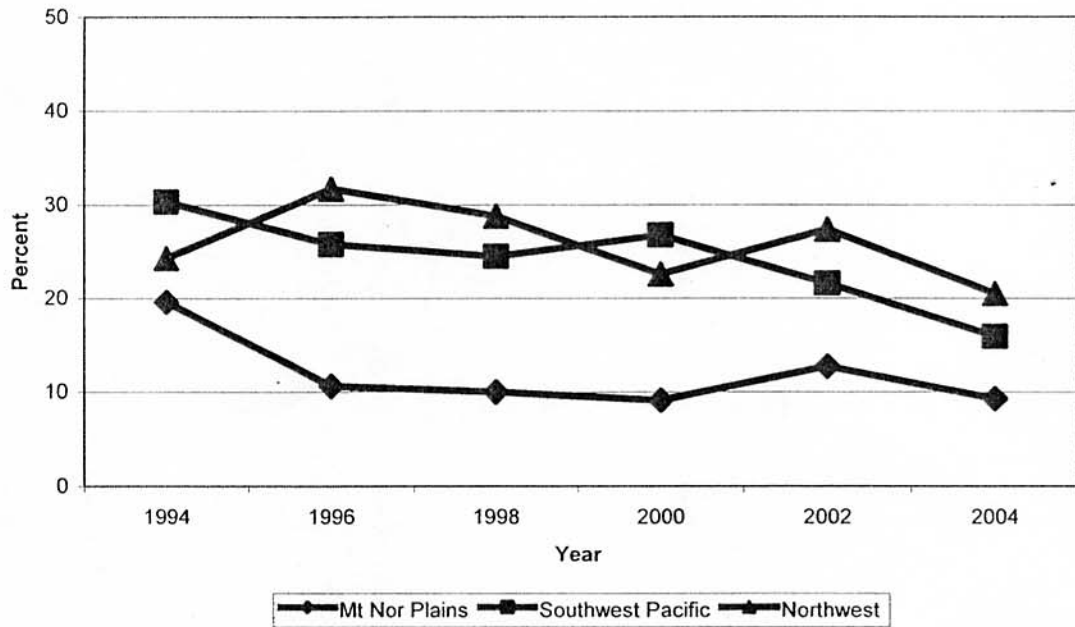
Percent of Union Employment  
South Region



Percent Union Employment  
North Central Region



Percent Union Employment  
West Region



STATES and REGIONS

New England

Connecticut  
Maine  
Massachusetts  
New Hampshire  
Rhode Island  
Vermont

Middle Atlantic

District of Columbia  
Delaware  
Maryland  
New Jersey  
New York  
Pennsylvania

Southeast

Alabama  
Florida  
Georgia  
Kentucky  
Mississippi  
North Carolina  
South Carolina  
Tennessee  
Virginia

East North Central

Illinois  
Indiana  
Michigan  
Minnesota  
Ohio  
West Virginia  
Wisconsin

West North Central

Iowa  
Kansas  
Missouri  
Nebraska

South Central

Arkansas  
Louisiana  
New Mexico  
Oklahoma  
Texas

Mountain-Northern Plains

Colorado  
Montana  
North Dakota  
South Dakota  
Utah  
Wyoming

Southwest Pacific

Arizona  
California  
Hawaii  
Nevada

Northwest

Alaska  
Idaho  
Oregon  
Washington